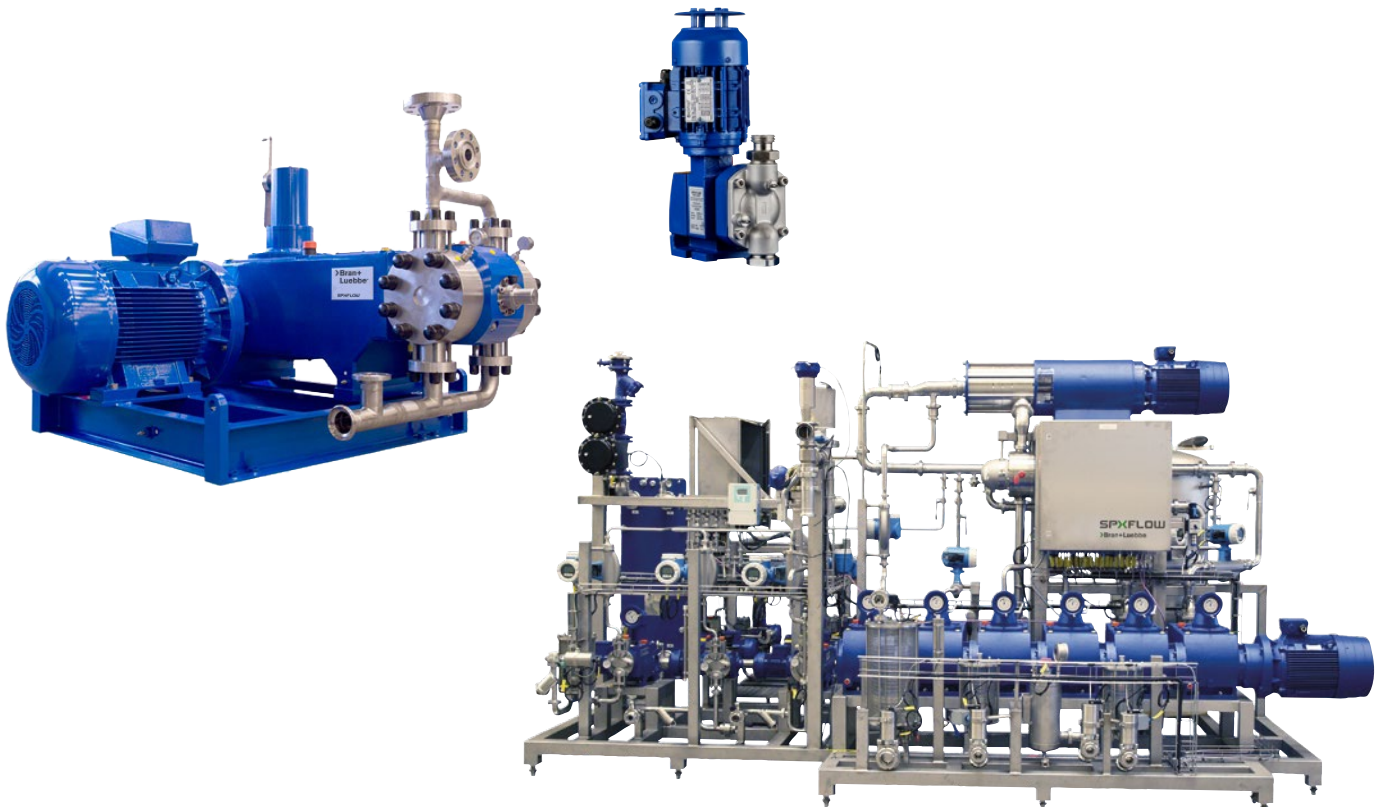




PRODUCT OVERVIEW



PRECISION METERING. PROVEN PROCESS PERFORMANCE. GLOBAL SUPPORT.

Bran+Luebbe® brand pumps and systems from SPX FLOW deliver accurate, reliable fluid handling for critical industrial processes. For more than 90 years, customers worldwide have trusted our metering pumps, process diaphragm pumps, integrated process systems, and complementary technologies to move challenging liquids with confidence. Our engineering teams pair deep application knowledge with a global service footprint, helping you improve quality, reduce downtime, and lower total cost of ownership.

PROCAM METERING PUMPS

The ProCam modular building block system allows single and multi stream pumps to provide an economical and reliable solution for a wide range of metering applications.



ProCam Diaphragm/Plunger Pump

Engineered, single or multi stream pump designed to meet specific application requirements.

Diaphragm Pump:*

Flow Range: up to 3,000 l/h
Operating Pressure: up to 20 bar*

Plunger Pump:*

Flow Range: 0.16 to 60.5 l/h
Operating Pressure: up to 80 bar*



ProCam Compact Metering Station

Compact design - ProCam metering pump and metering station allows easy preparation of products to be metered.

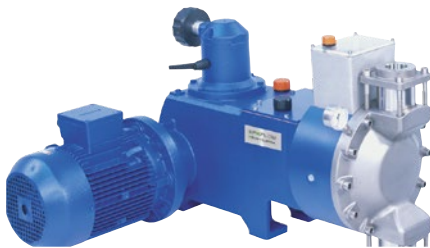
Flow Range: 5 to 500 l/h
Operating Pressure: up to 20 bar*
Tank Size: 60 to 500 L

* For specific types and designs



NOVADOS METERING PUMPS

The NOVADOS offers an unparalleled range of metering pumps for an extensive number of liquid metering or blending applications.



NOVADOS Diaphragm / Plunger Pumps

Robust pump with outstanding performance parameters to suit applications using hermetically sealed pump heads to handle hazardous liquids.

Using the same drive design as for diaphragm pumps, the plunger pump head option can be considered for less demanding applications.

Flow Range:	400 ml/h to 10,000 l/h
Operating Pressure:	up to 1,000 bar* (diaphragm) up to 500 bar* (plunger)



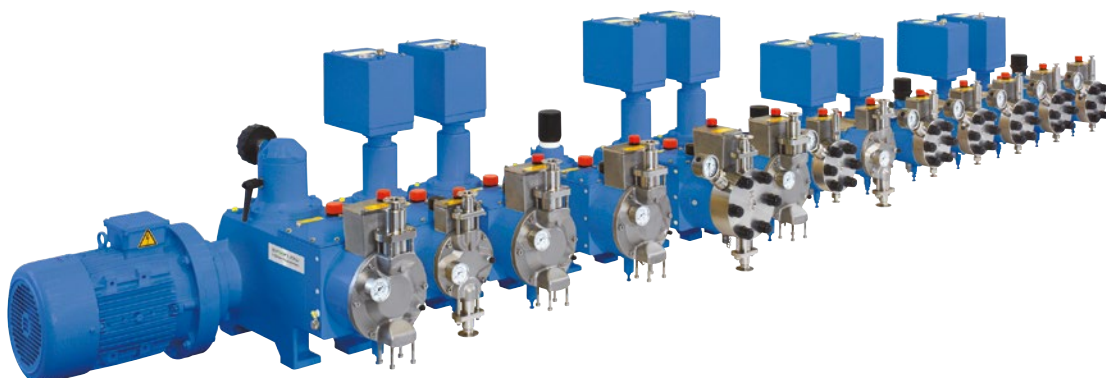
NOVADOS Pumps with Double-acting Diaphragm Pump Head

Twice the flow of a traditional diaphragm pump head it removes the need for a duplex design, reducing footprint and weight. Equipped with a suction pressure module as special option it is suitable for low energy recirculation processes.

Modular Building Block - Horizontal and Vertical Configuration

Combination of diaphragm or plunger pumps for multi-stream applications with gears and pump heads matching the specifications of the customer.

* For specific types and designs



NOVAPLEX PROCESS DIAPHRAGM PUMPS

The Bran+Luebbe NOVAPLEX is a flexible high performance process diaphragm pump handling toxic or aggressive liquids and suspensions at high flow rates and pressure. Typical applications can be found in the chemical, petrochemical as well as oil & gas industries.



NOVAPLEX Integral

NOVAPLEX Integral diaphragm process pumps are powerful and exact feed pumps in processes where high capacities and/or high operating pressures are required. Equipped with an integrated reduction gear the pumps are very compact with a small foot print.

Flow Range:	up to approx. 60 m ³ /h
Operating Pressure:	up to 1,000 bar*

NOVAPLEX Classic

Designed with an external reduction gear this pump allows the incorporation of customer specified gearboxes.

Flow Range:	up to approx. 80 m ³ /h
Operating Pressure:	up to 1.000 bar*

* For specific types and designs



AUTOBLEND PROCESS SYSTEMS

Process units designed for high quality products blended from liquids, pastes and dissolved powders.

Our core competence:

- Dilution of chemicals
- Production of personal care products and household detergents
- Systems in paper production
- Continuous dilution of ether sulphate paste
- Systems in water treatment plants
- Production plants for industrial cleaners and cooling agents
- Oil & Gas



TYPICAL SYSTEMS**:

Chemical Industry

Preparation and metering of cold-coating agent for glass containers. Specifically pharmaceutical phials need internal coating to meet the quality requirements of scratch-free internal surface.



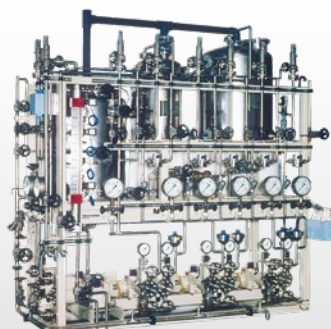
Personal Care and Household Detergents

The production of shampoos, shower gels, heavy and standard liquid detergents, fabric softener, and household detergents require an exact metering and suitable mixing process in order to meet the stringent specifications. Using high quality SPX FLOW components the customer can rely on constant quality, low operating cost, reduced maintenance and high availability of the system.



Water Treatment

Treating boiler feed water is a major task in power plants (conventional and nuclear) and district heating. We supply customer specified plants for various applications.



Oil & Gas Industry

Within the Oil and Gas Industry, the requirements for Chemical Injection Packages are very diverse depending on the application, location, number of chemicals, multi-point injection, increases in production output and changes in production conditions. We supply basic single chemical / single injection point skids to multi-ingredient chemical pumping packages.



** More applications on request

MIXERS

Static or dynamic in-line mixers are available for a variety of operations covering a wide range of applications.

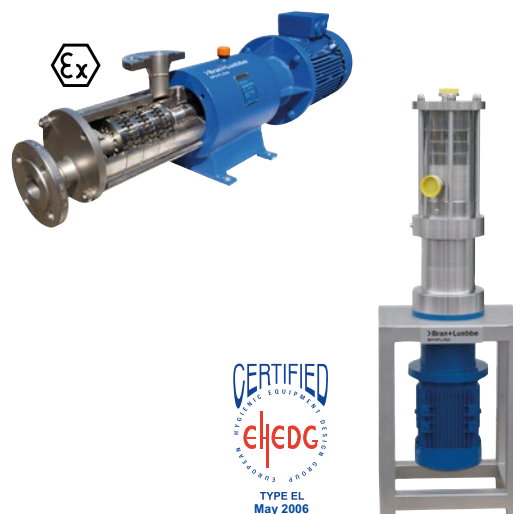


PENTAX - Dynamic Mixer

The dynamic in-line PENTAX mixer is designed to meet the demands of industrial markets. An hygienic option is also available. Both designs incorporate the following characteristics:

- High reliability and trouble-free operation due to the robust design
- Stator and rotor mixing system ensures a constant and stable mixing result
- Various options of materials for mechanical seals, gaskets, and drives are available to meet specific process requirements

Throughput: up to 50,000l/h*
Operating Pressure: up to 10 bar



N-Form - Static Mixer

Simple and robust with no moving parts for trouble-free operation.

- Materials: SS 1.4571 / 1.4581*
- Diameters: DN 15 to DN 65
- Connection: as required
- Heating/cooling: jacketing possible
- Mixing elements can be removed for cleaning and inspection.

* Special designs on request



ANALYZERS

With a wide range of process analyzers and an experienced team, Bran+Luebbe is an internationally recognised brand. The latest technology, reliable service and support are offered for the water and waste water treatment industries.

PowerMon Titrometer

BO_3^{3-} , hardness, H_2O_2 , peracetic acid, acidity (p/m-value), S^{2-}

PowerMon Kolorimeter

Al^{3+} , Cl_2 , ClO_2 , Cr^{6+} , Co , CN^- , Cu^{2+} , $\text{Fe}^{2+/3+}$, Hazen, Mn^{2+} , N_2H_4 , NH_4^+ , Ni^{2+} , NO_3^- , NO_2^- , Phenol, PO_4^{3-} , TP, S^{2-}

PowerMon Silikometer

SiO_2

PowerMon Natriometer

Na^+

PowerMon Ionometer

CO_2 , Cl^- , K^+ , NH_4^+ , F^- , NO_3^-

Other parameters and combinations are possible.



PowerMon NG

The PowerMon NG is the latest development in the Bran+Luebbe fully automatic on-line process analyzer family. The measuring range reaches from normal concentrations down to traces by using wet-chemical reactions. Fully automatic operation, self-monitoring, and automatic recalibration make them an ideal on-line process analyzer.

PowerMon NG Spectrometer

The PowerMon NG Spectrometer is a compact closed multi-component analyzing system. Based on spectrometry it is an easy-to-handle economic system.

- Multi-component on-line analyzer
- Measured components: total nitrogen, total phosphate, DOC, CSB



AFTER SALES SUPPORT

- Original spare parts – Simple to order by telephone, email or fax
- Service contract – Annual planned maintenance with pre-ordered parts required for service
- Field Service – On site repairs both onshore & offshore with support usually available in 1 to 3 days
- Return & repair – Complete in-house repair with test & certification as required
- Technical support – Telephone contact for technical advice, installation & start-up assistance, equipment inspection & assessment & modification of existing equipment
- Training – Maintenance, operator & repair training
- Commissioning – Installation & start-up service



The Williams - Carver Co., Inc.

4001 Mission Road
Kansas City, Kansas 66103
[913] 236-4949 FAX [913] 236-9331
www.williamscarver.com

GLOBAL LOCATIONS

EMEA

SPX FLOW TECHNOLOGY
Werkstraße 4
D-22844 Norderstedt
Germany
Phone: +49 (0) 40 - 522 02 -0

EMEA

SPX Flow Europe Ltd
Unit B1, Brooklands Technology
Park, Brooklands Gate,
Sywell Aerodrome
Wellingborough Road
Northampton, NN6 0GY
United Kingdom
Phone: +44 1604 880751

SPXFLOW®

SPX FLOW, Inc. reserves the right to incorporate our latest design and material changes without notice or obligation. Design features, materials of construction and dimensional data, as described in this bulletin, are provided for your information only and should not be relied upon unless confirmed in writing. Please contact your local sales representative for product availability in your region. The green ">" is a trademark of SPX FLOW, Inc.

For more information, visit www.spxflow.com/bran-luebbe.