

Hygienic Twin Screw Pumps

Series SLH-5G

Bornemann SLH pumps combine advantages of a conventional positive displacement pump with the performances of a centrifugal pump. It conveys low and high viscous products and achieves the required flow velocity for cleaning. This eliminates the need for a second pump and reduces valves, piping and controls. The robust and PATENTED design of the SLH-5G meets the demands of tomorrow by offering increased efficiency and performance in an easy to maintain and cost-effective dual-duty pump.

ADVANTAGES

Dual Duty

The SLH twin screw is a true dual duty pump, capable of both processing and CIP.

Gentle Handling

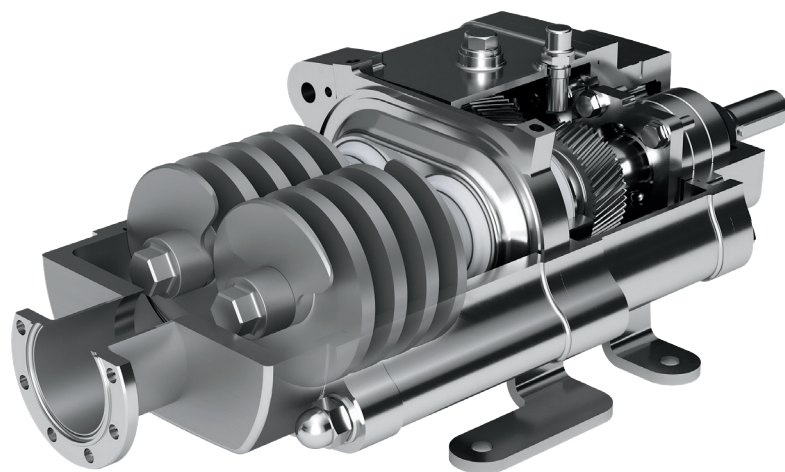
The axial conveyance operation helps protect the process liquid while maintaining any solids size and visual integrity.

Long Service Life

SLH Pumps feature no metal-to-metal contact between screws and housing. This provides trouble-free conveyance even for abrasive media and minimal downtime.

High Temperature Differences

The design and material choices allow maximum temperature differences from 39°F/4°C to 203°F/95°C, empowering a problem free, high temperature cleaning process subsequent to the conveying process.



USP Class VI, NSF and FDA: applicable for defined configurations only



CHARACTERISTICS

- Operates at a wide range of speeds for duty flexibility
- Self-priming (requires minimal product for sealing)
- Safe operation at high viscosities
- Low pulsation
- Low noise level
- Constant flow at varying pressures and volumes
- Suction lift up to 25 feet (8.5 m)
- Reverse operation allows suction piping to be emptied

FEATURES

- Improved PATENTED design for ease of maintenance
- 3-A, EHEDG
- Standard 32Ra (Ra < 0.8µm) finish
- Standard tri-clamp fittings
- Multiple seal options available
- No Dead Zones
- Easy drop-in replacement with previous models
- Diffusion-hardened body, housing and screws for abrasion resistance.

OPTIONS

- 4 model sizes available
- 6 standard screw pitches per size
- Multiple port sizes available
- Multiple seal options available
- Heating/Cooling Casing Jacket
- LipSeal Protect Coating
- Thermal Resistance Option

